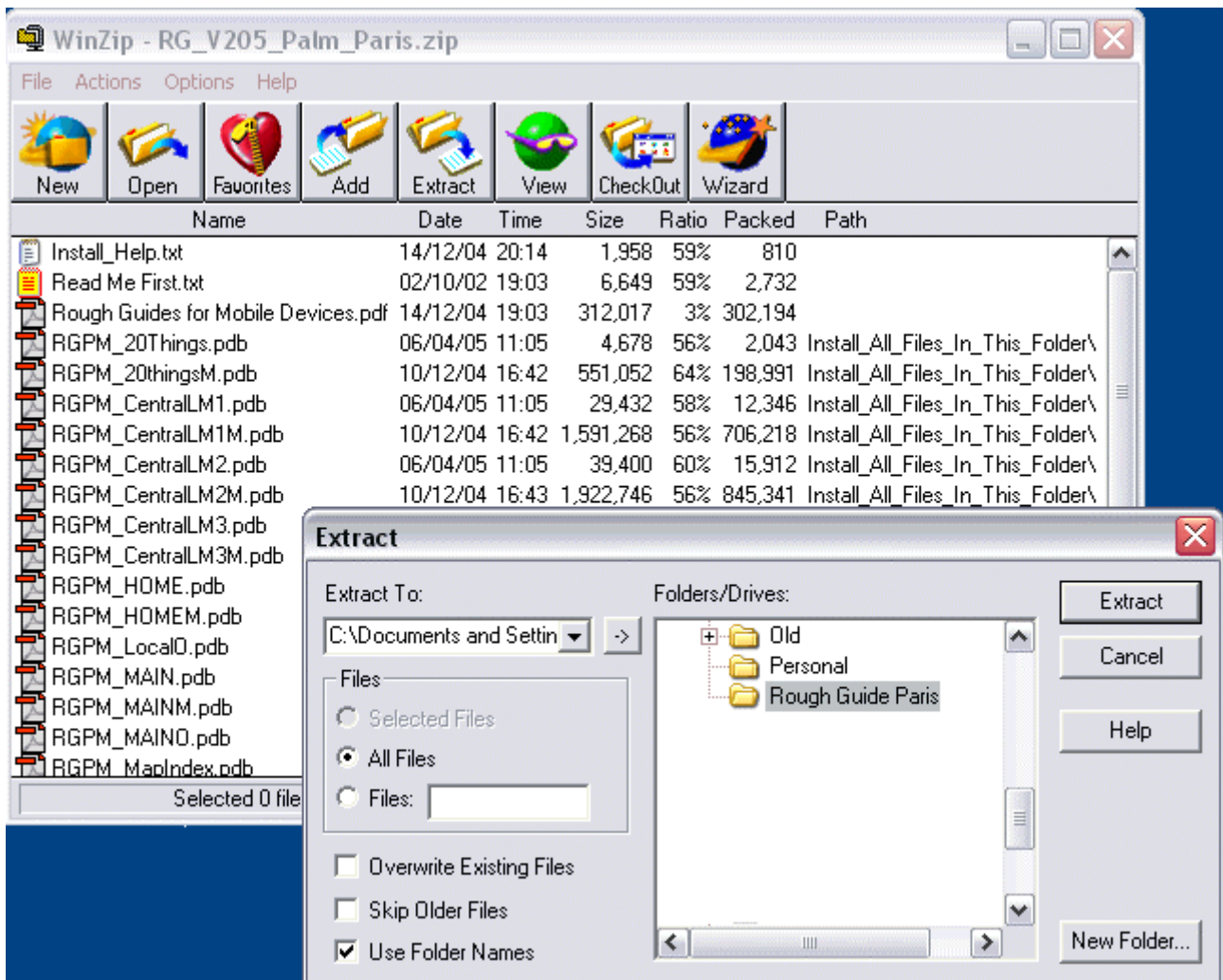


Installing Rough Guide Maps on Palm OS Devices.

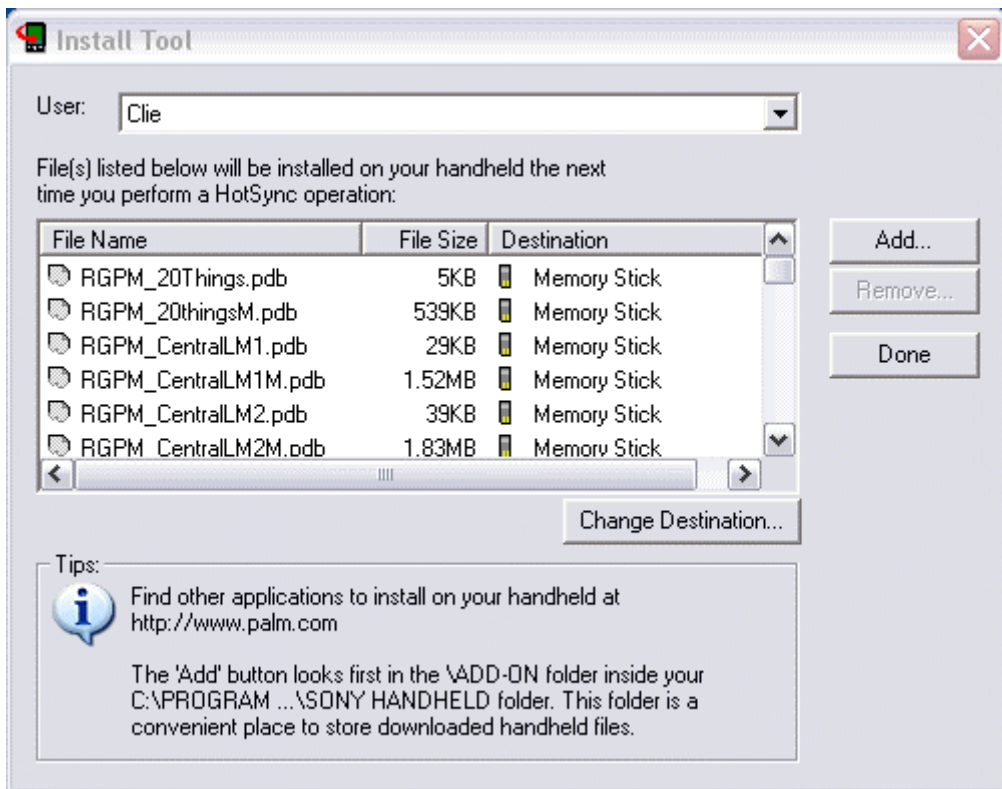
1. The download file is a zip (compressed) file, contained within this zip file you will find several files that you need to install across to your Palm device.
2. Create a new folder on your PC desktop by right clicking on your mouse, choosing "New Folder", and then rename the folder "RoughGuideMapname"
3. Open the zip file that you downloaded and extract the RGxx_Showcase.prc and all the .pdb files to the folder you just created.
4. If you do not have winzip installed on your pc you can download a free evaluation copy from here: - <http://www.winzip.com>



WinZip Window

5. Once the files have been extracted from the zip file into the folder, double check the contents to ensure you have all the files in here.

6. Start the program 'Palm Install Tool' on your desktop PC, and 'drag & drop' or 'copy & paste' the RGxx_Showcase.prc and all of the .pdb files across into the Palm Install Tool window. You should see each of the files added to the list view.
7. If you wish to install to a storage card or memory stick: click on the change destination button and move the pdb files over. For best performance leave the RGxx_Showcase.prc file in main memory.



Palm Install Tool Window

8. Click the Done button and you will get a HotSync message.
9. Place you Palm device in its cradle and press the HotSync button, you should see the files install to your device in the HotSync progress window.
10. After the HotSync the Install Tool should show an empty list of files. If any files are left in the Install Tool then its possible there was an error installing and you should check your HotSync log. You can view the log by starting the Palm Desktop on your PC and going to HotSync ~ View Log.
11. On your Palm device go to the app launcher window and tap the Rough Guide icon to start the application.
12. If you have any problems starting the application or viewing any maps check your HotSync log to ensure no errors were reported during the install.
13. Registering your software.
 The unregistered version will work for 1 day, when you purchase you will be supplied with a serial/unlock code in your sales receipt. Please note that the unlock code supplied is tied to your Palm Hotsync ID / Device user name. The Hotsync ID / Device user name is case sensitive, so please check you have supplied the name exactly as it is displayed in the register window of the application.
 If you need a new unlock code please email support@visualit.co.uk with a copy of your sales receipt and with your correct Hotsync ID / Device owner name.